

# BUNBURY SEA RESCUE

## NEWSLETTER

*Last year we returned 33 people safely to their families and loved ones*

### BUILDING WORK CONTINUES

**A great effort by our volunteer members ensured that 12.5 tonnes of concrete went into the new jetty abutments in preparation for the second floating jetty.**

Under the guidance of Kerry Trantham who prepared the formwork almost single handed we saw the pouring of the concrete to create our new jetty abutment on Wed 30th November.

This was an enormous effort and we had support from members and friends to complete the task.

Bringing the concrete trucks through the shed onto a specially constructed sleeper ramp made the task somewhat less difficult.

The ladies ensured that the works team were supported with morning tea and lunch which was appreciated by all involved.

Negotiations are continuing to have a pile driving crew complete the work once Kerry has carried out tests to establish the depth of rock at the site. Indications from the Bunbury Port Authority are that they are interested in replacing the stern line from the Pilot Boat to the concrete anchor which will remove that hazard from the wharf area. We anticipate the cost of pile driving the three piles to be \$7,500 using donated piles, caps and sleeves.

Concurrently with this project our newest member Alec Balloch has taken on the project of erecting our new communications tower which will replace the shortened tower on the main roof which we had to modify as a result of corrosion and as a result were unable to use our HF radio. The new tower will overcome a number of problems and allow us to lower the antennas for servicing without the need to ascend the roof.

***Thank you to all involved in these great efforts***



### Crew Competencies

The first of our assessments for crew competencies has been undertaken and although at relatively short notice two candidates presented to the assessment team and both acquitted themselves extremely well. Michael (SAS) Cooper and Wende Smith have been accredited as Rescue Crew 2 (VMR2).

**BRAVO ZULU**

Wed 21st Dec - next assessments

# BUNBURY SEA RESCUE

## FESA Grant to Improve Boat Shed

FESA have advised approval of a capital improvement grant of \$20,000 towards the renovation of our original boat shed in preparation for the new boat.

The old shed which was the original building on the site is more than 30 years old and has undergone considerable change to accommodate the changing needs of the group.

The intent is to delay the planned improvements until the new boat arrives when we can ensure the money is used to best advantage.

## Foreshore Stabilisation Project

With the completion of the jetty we will move to install wire mesh baskets 1 meter high by 1 metre wide along the foreshore behind the second boat shed then back fill with ballast on filter fabric to batter the surface up to the ground level of the shed. This will enable the laying of a concrete slab and the installation of a patio roof to provide shelter for members undergoing training or for social events. This will tie in with the proposed launching ramp which will sit behind the extended boat shed allowing the direct launching of trailer borne craft.

These changes will extend our capability and subject to receiving the necessary approval are proposed for the 2012 year.

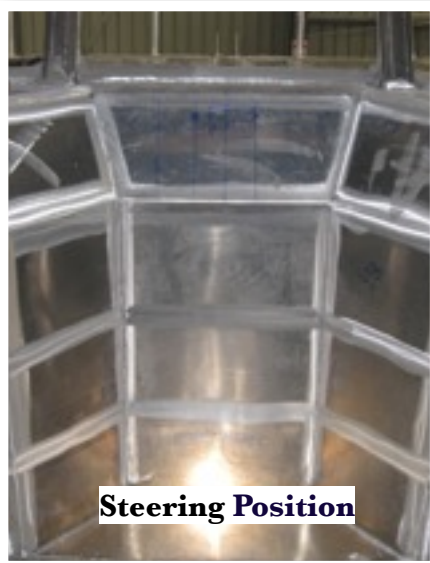
## Helping Bunbury Port Authority

BPA have asked for our help in January to accommodate their Air Berth in our shed for repairs.

This will require us to store our boats and the Troop Carrier off site for around 3-4 days.

BPA have been generous and co-operative landlords to BSR and it is a pleasure to be able to repay their

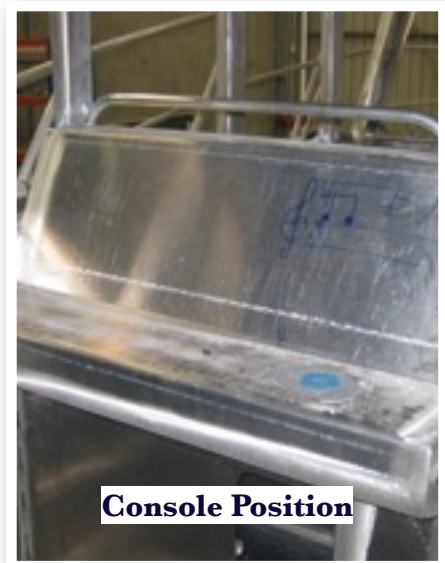
## Slipway Project



**Steering Position**

## New Boat Ready By January 2011

Elite Marine of Henderson have currently completed the fabrication and advised the arrival of the engine and all the ancillary equipment. The boat is currently at the painters and we hope to have a confirmed date for delivery towards the end of January. with Hank taking on a contract in Albany Eliot and Noel have taken on the role of seeing the project to completion.



**Console Position**

# BUNBURY SEA RESCUE

## Improvements to our Base

Members will recall that during the last few months we have been discussing how to accommodate the growing needs of the group.

Members have identified the need for a separate communications facility, an operations area, an improved and protected entrance facility and concrete flooring to the boat shed and breezeway.

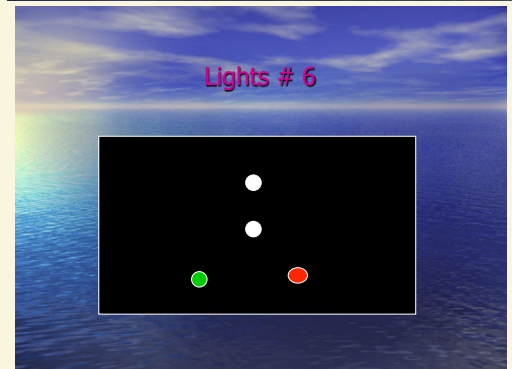
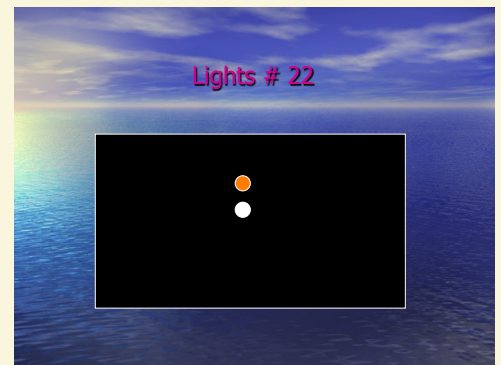
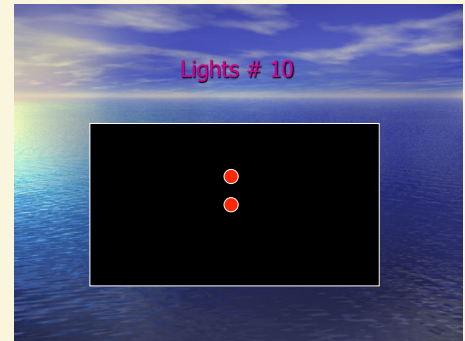
In addition we need a patio on the harbour side a, launching ramp and extensions to boat shed two to house VMR2 and allow launching directly into the harbour.

The opportunity to make inputs to the proposal were advised and an outline plan provided in the training room with comments invited.

In February the draughtsman will attend the meeting to discuss the proposal so that plans can be prepared and the grant application made for the 2012 round.

It is hoped that this project will be underway in the 2012 with the build in of the area to the south of the training room.

Merry Christmas to all our members and supporters  
from the Committee of Bunbury Sea Rescue



**Test your Skills**  
**Light Recognition for Skippers**  
**(Answers back page)**

# BUNBURY SEA RESCUE

## BCF CLUB AND SAFETY NIGHT

On the 23rd November an extremely successful safety evening was held in conjunction with the BCF Club Night at their Blair St premises.

A feature of the night was the display of our boat VMR2 and the Troop Carrier and information on Radio Courses and recreational Skippers tickets.

A flare display attracted the attention of patrons and provided a spectacular sight.

BCF Manager John Boeing presented the group with a GPS EPIRB for the new boat and a barbeque and gas bottle. Surplus sausages and buns were delivered to our Chaplain MAJ Trevor Wilson SA for distribution to the Bush Fire victims.



### Nautical Knowledge Rule of the Road

Rule 14 **compels** both power driven vessels approaching "head On" to alter course to starboard - **if necessary to avoid a collision or allow more time to assess the situation**, a vessel shall slacken speed or take all way off by stopping or reversing.



#### Important dates

**Christmas Barbeque**

*12th December*

**RST**

*17th December*

#### Answers to lights Quiz

- 10 PDV not under command
- 22 PDV towing from astern
- 9 PDV constrained by her draft from ahead
- 6 PDV over 50 length from ahead

#### Under Way

- Is a vessel that is not:
- At anchor
- Aground
- Attached to the shore